



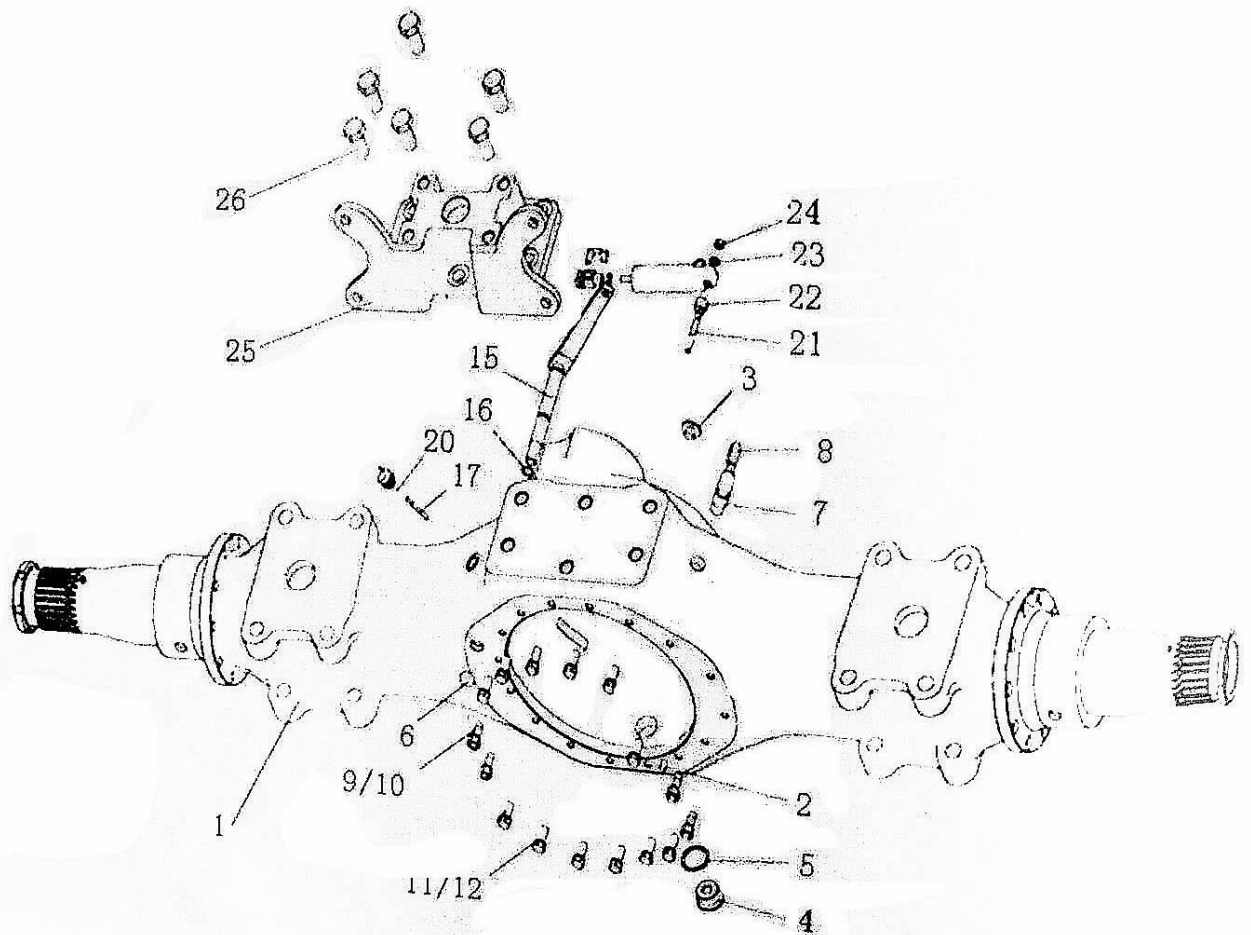
**SINOTRUK**

**HOWO HC16 DRIVING AXLE**

**SPARE PARTS CATALOG**

## INDEX

FIRST REAR DRIVING AXLE CASE	Page 3
FIRST REAR DRIVING AXLE	Page 5
REAR DRIVING AXLE CASE	Page 9
REAR DRIVING AXLE	Page 11
WHEEL REDUCTER AND BRAKE	Page 13

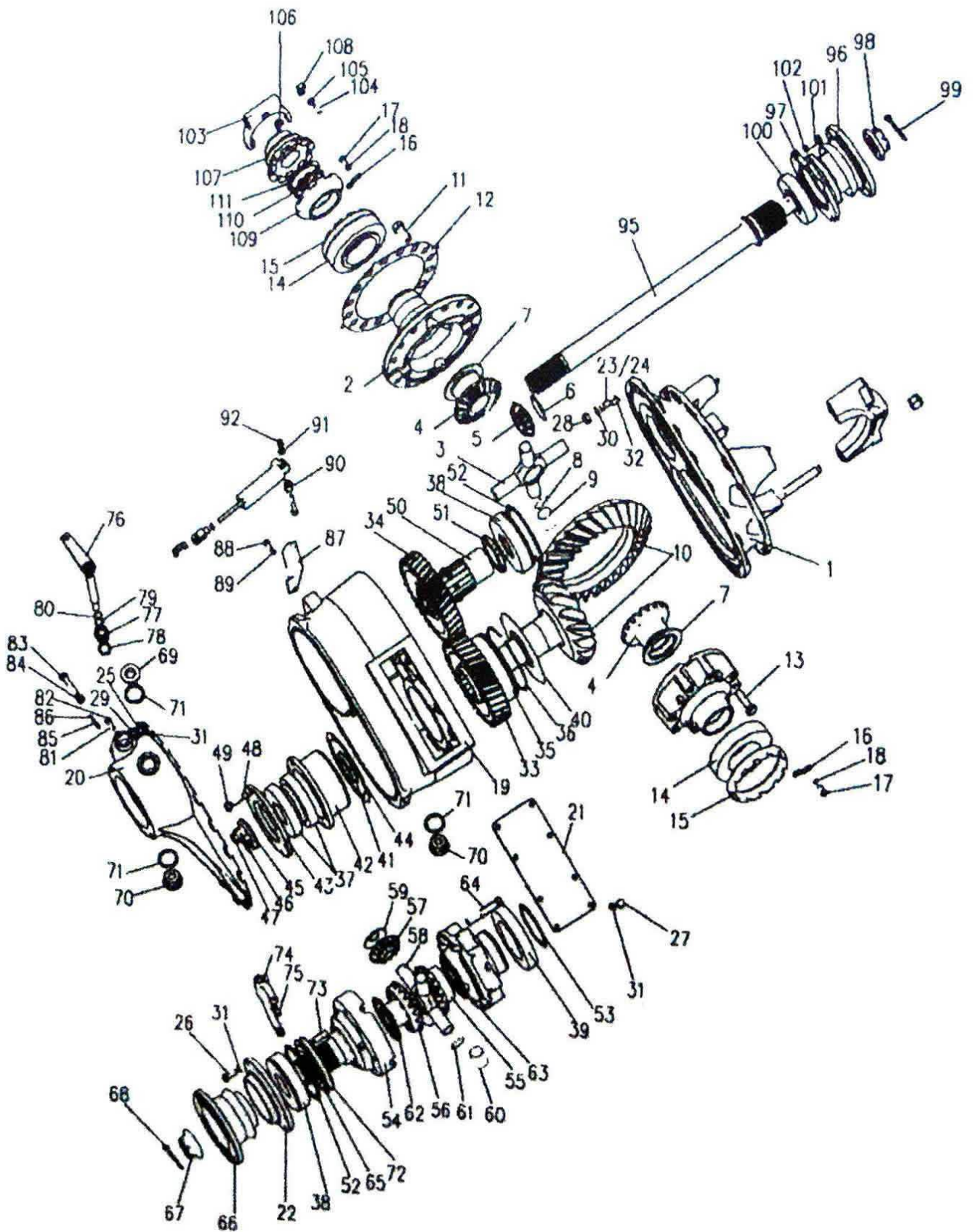


FIRST REAR DRIVING AXLE CASE, HC16 AXLE

powered by CHINA HEAVY TRUCK PARTS STORE CO LTD, [www.sinotruk-parts-store.com](http://www.sinotruk-parts-store.com)

Serial	Number	Name	Quantity
1	AZ9231330990	first rear axle case	1
2	Q5211016	column pin	1
3	190003962021	screw plug	1
4	WG9231330015	magnetic screw plug assy	1
5	Q72336	sealing ring	1
6	190003989290	plug	1
7	WG9231330105	air plug	1
8	WG9231330106	rubber tube	1
9	Q151C1230TF2	hexagonal head bolt	1
10	Q40312	spring gasket	4
11	190003810631	double head bolt	4
12	190003888457	self-locking nut	16
13	WG2297Y4835	nameplate	1
14	190003904529	rivet	2

15	WG9014330126	joystick assy	1
16	1680M320015	O type gasket	1
17	WG9112330016	pin	1
18	WG9231330808	pin	1
19	WG9231330809	pin	1
20	Q43705	steel retaining ring for shaft	1
21	Q1200850F3	double head bolt	1
22	WG61000060084	space bushing	1
23	Q40108	flat gasket	1
24	Q33208	hexagonal locking nut	1
25	WG9231340944	support of chamber	1
26	Q151B2045TF2	hexagonal head bolt	1

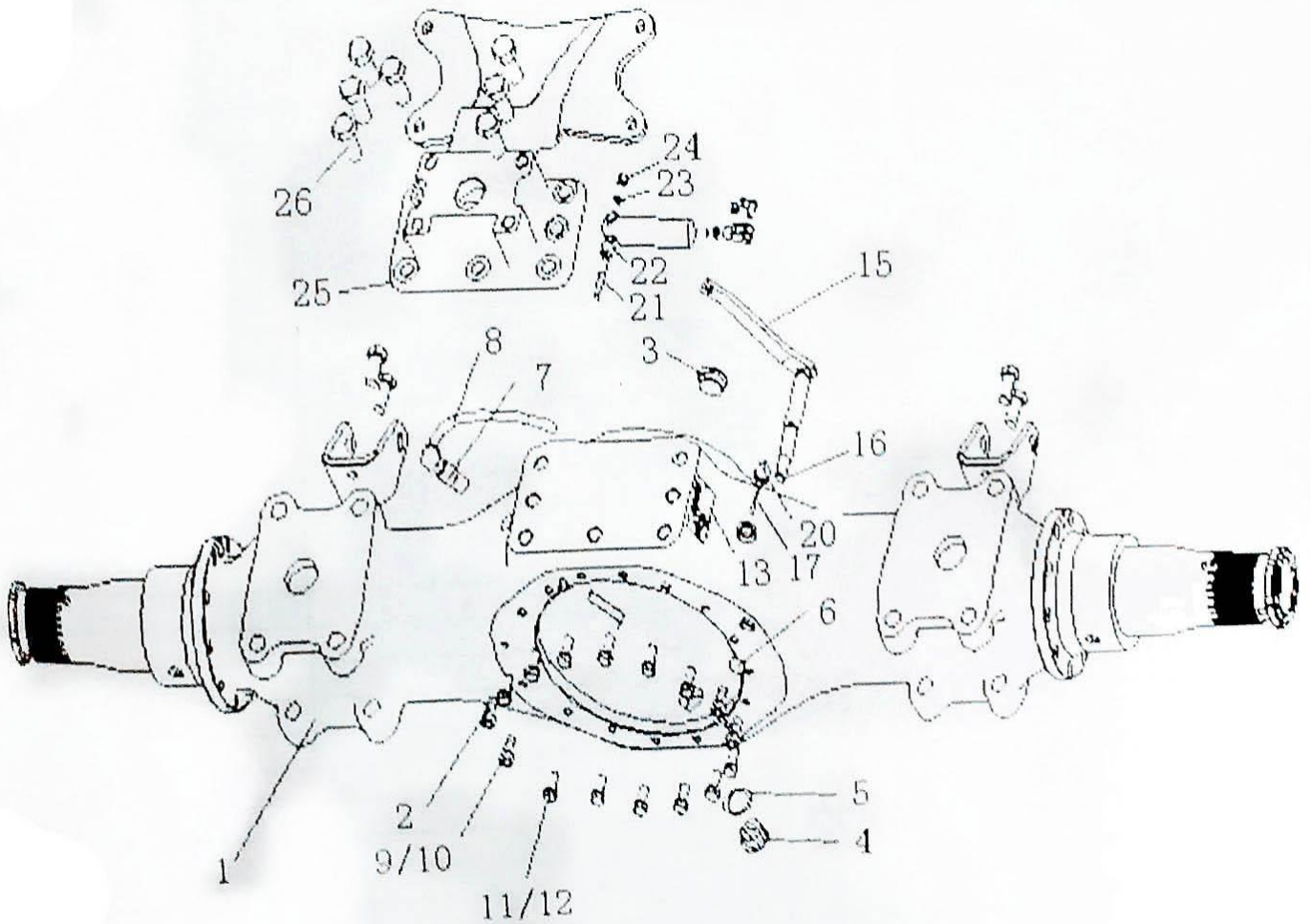


FIRST REAR DRIVING AXLE, HC16 AXLE			
<i>powered by CHINA HEAVY TRUCK PARTS STORE CO LTD, www.sinotruk-parts-store.com</i>			
Serial	Number	Name	Quantity
1	WG9014320120	main reduction case (first rear axle)	1
2	AZ9231320272	differential case	1
3	AZ9231320150	universal joint shaft	1
4	WG9231320151	half shaft gear	2
5	WG9231320152	planetary gear	4
6	WG9231320153	planetary gear gasket	4
7	AZ9231320154	adjusting gasket	need
7	AZ9231320155	adjusting gasket	need
7	AZ9231320156	adjusting gasket	need
7	AZ9231320157	adjusting gasket	need
7	AZ9231320158	adjusting gasket	need
8	WG9231320159	bushing	4
9	WG9231320160	bushing retaining gasket	4
10	WG9114320251	cone gear	1
100	WG9231326212	double line cone rolling bearing	1
101	Q150B1030	hexagonal head bolt	6
103	WG9012320014	shifting fork	1
104	Q2800825	slotted cone head locking screw	1
107	WG3809320156	sliding shifting sleeve	1
108	WG9012320023	bending plate	1
109	WG3809320155	fixed shifting sleeve	1
11	Q151B1635TF2	hexagonal head bolt	16
110	WG3809320158	locking gasket	1
111	WG3809320157	nut	1
114	WG2297Y4835	nameplate	1
115	190003904529	rivet	2
12	WG9114320003	locking plate	1
13	WG9231320169	hexagonal head bolt	8
14	190003326148	cone rolling bearing	2
15	WG3809320159	bearing adjusting nut for differential	2
16	WG79000320027	thrust washer	2
17	Q150B0816	hexagonal head bolt	2
18、89	Q40308	spring gasket	2
19	AZ9231320259	bridge case	1
20	AZ9231320264	cap of bridge case	1
21	WG9014320175	end cap	1
22	WG9014320118	oil plate	1
23	190003813628	double head bolt	14
24	Q1201225F3	double head bolt	4

25	Q1201028F3	double head bolt	18
26	Q150B1025	hexagonal head bolt	8
27	Q150B1020Q	hexagonal head bolt	8
28	Q340B12	hexagonal head nut	18
29、84	Q340B10	hexagonal head nut	18
30	Q40312	spring gasket	18
31、102	Q40310	spring gasket	34
32	Q5211016	column pin	4
33	WG9014320208	driven column gear Z=26 ratio 4.8	1
33	WG9014320137	driven column gear ratio 5.73	1
33	WG9114320001	driven column gear Z=27 ratio 3.93/4.42	1
34	WG9014320136	driving column gear ratio 5.73	1
34	WG9214320002	driving column gear Z=35 ratio 3.93/4.42	1
34	WG9014320209	driven column gear Z=35 ratio 4.8	1
35	WG9014320257	rolling bearing	1
36	WG9014320256	steel retaining ring	1
37	190003326333	cone rolling bearing	2
38	190003311543	annular ball bearing with snap ring groove	2
39	190003310239	ball bearing	1
40	WG9014320174	oil retaining plate	1
41	WG9014320140	space ring	1
42	WG9014320129	bearing seat	1
43	WG9014320128	outer ring pressure plate for bearing	1
44	WG9014320131	adjusting gasket	need
44	WG9014320132	adjusting gasket	need
44	WG9014320133	adjusting gasket	need
44	WG9014320134	adjusting gasket	need
45	WG780320088	pressure plate for bearing	1
46	WG9114320002	locking plate-tightning bolt	1
47	Q150B1430TF2	hexagonal head bolt	3
48	190003813543	double head bolt	8
49	Q33210	hexagonal head nut	8
50	WG9014320135	hollow shaft	1
51	WG9012250031	slotted nut	1
52	Q433130	flatten steel retaining ring for shaft	2
53	190003933580	elastic retaining ring for shaft	1
54	AZ9231320271	differential case	1
55	WG9231320226	rear half shaft gear	1
56	WG9231320225	front half shaft gear	1
57	WG9231320227	planetary gear	4
58	AZ9231320223	universal joint shaft	1
59	WG9231320224	planetary gear gasket	4

60	WG9231320221	bushing	4
61	WG9231320222	bushing retaining ring	4
62	AZ9231320091-95	front bearing gasket	need
63	AZ9231320096-100	rear bearing gasket	need
64	Q151C1280TF2	hexagonal head bolt	12
65	WG9014320061	gasket for differential case	1
66	AZ9128320014	XS $\Phi$ 180 flange	1
67、98	WG79000320013	flange nut	1
68、99	Q5005055	cotter	1
69	WG81500010163	screw plug	1
70	15863315	magnetic screw plug	2
71	Q72336	sealing gasket	3
72	WG288320105	lock ring of differential	1
73	WG288320106	lock pin for differential	10
74	WG9014320053	shifting fork	1
75、106	WG1800320077	shifting fork moving block	2
76	WG9014320076	differential arm rocking arm assy	1
77	WG2700320037	bushing	1
78	AZ9231320038	O-ring	1
79	WG288730062	O-type sealing ring	1
80	190003933072	elastic retaining ring for shaft	1
81	190003902070	slotted long column locking screw	1
82、105	Q340B08	l-type hexagon nut	1
83	Q150B1050Q	hexagonal head bolt	1
85	WG69000330008	pin	1
86	Q43705	steel retaining ring for shaft	1
87	AZ9231320262	support	1
88	Q150B0818	hexagonal head bolt	2
90	WG61000060072	space bushing	1
91	Q40108	flat gasket	1
92	Q33208	hexagon locking nut	1
93、112	190003070026	sealing ring for shaft	1
94、113	190003078772	sealing ring for shaft	1
95	AZ9231320261	driving shaft	1
96	WG9231320205	$\Phi$ 165 output flange assy	1
97	WG9231320141	bearing seat	1



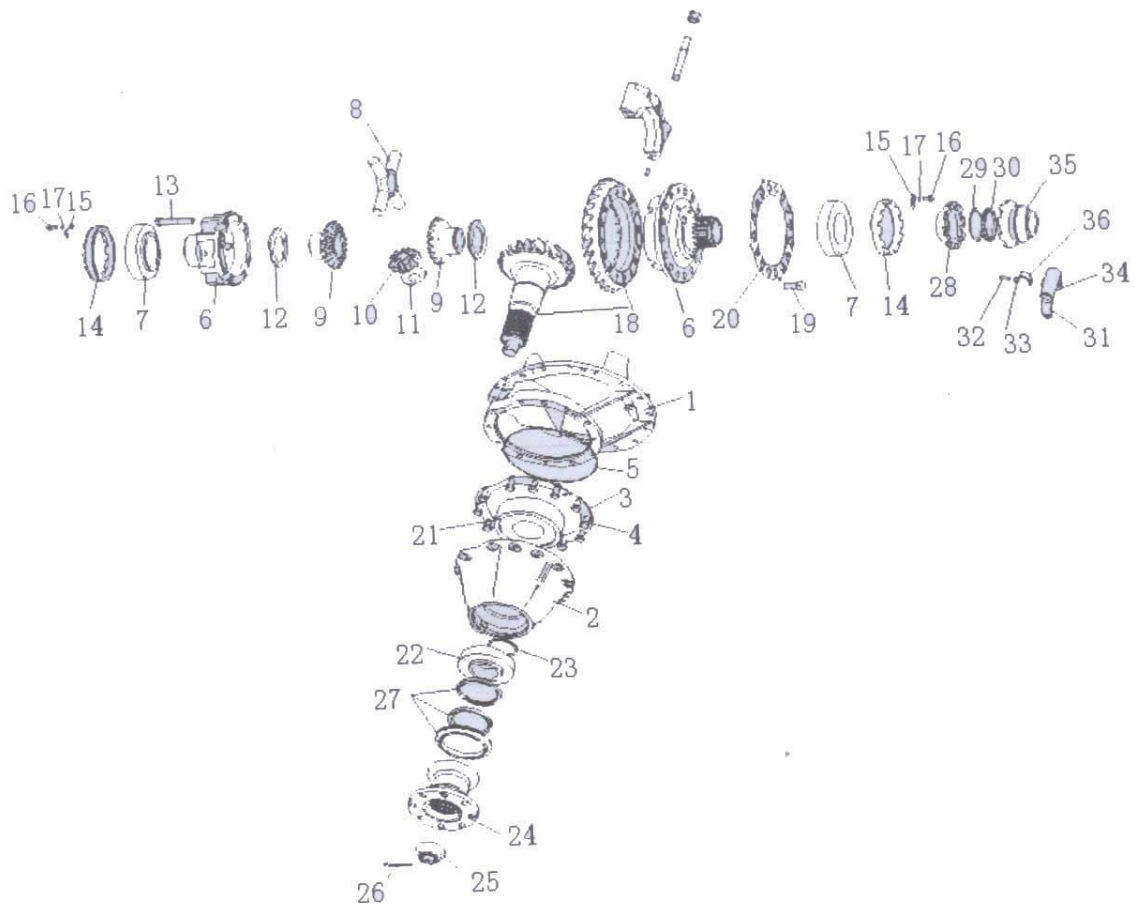


REAR DRIVING AXLE CASE, HC16 AXLE

powered by CHINA HEAVY TRUCK PARTS STORE CO LTD, [www.sinotruk-parts-store.com](http://www.sinotruk-parts-store.com)

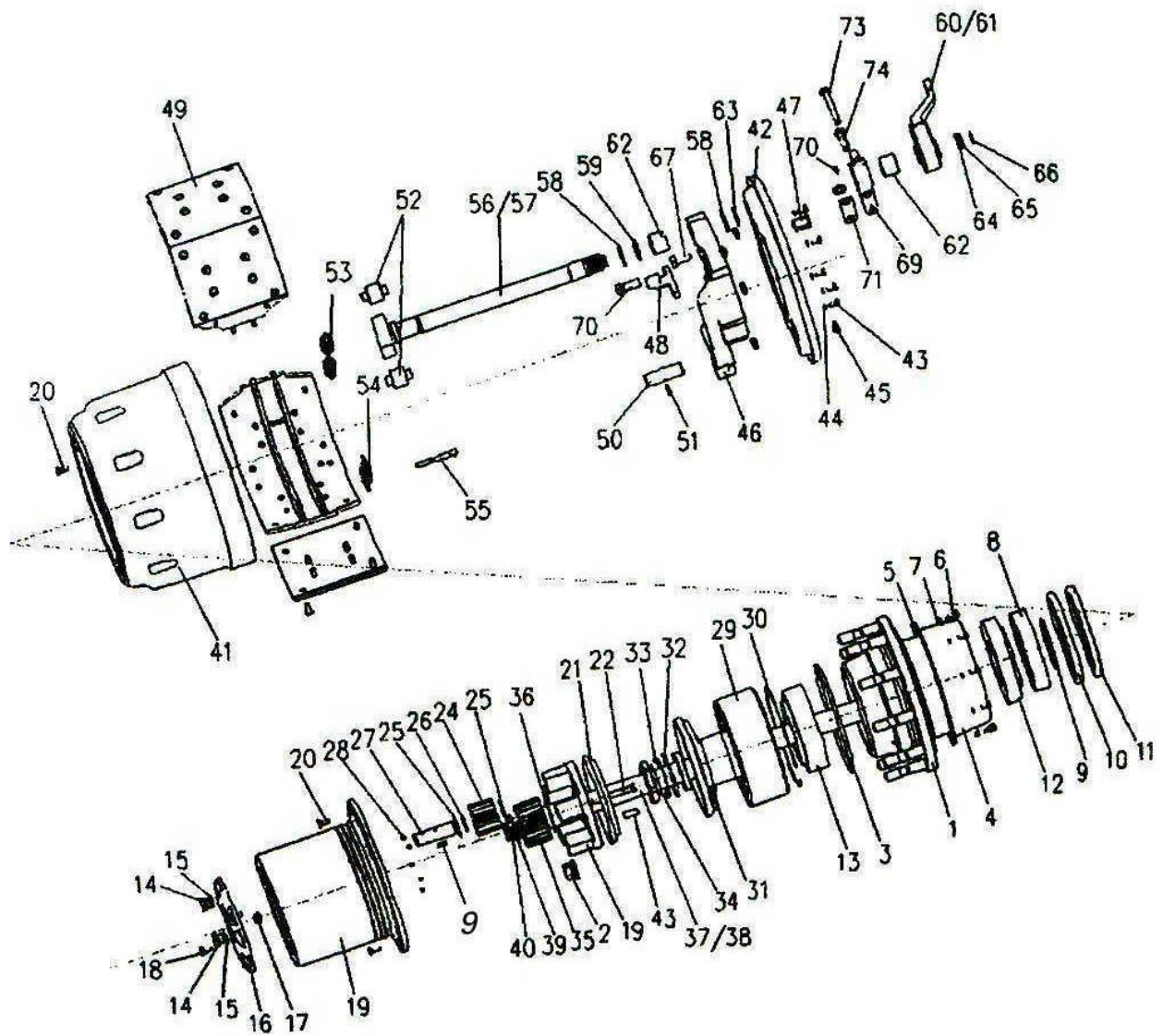
Serial	Number	Name	Quantity
1	AZ9231330948	rear axle case	1
2	Q5211016	column pin	1
3	WG81500010163	screw plug	1
4	WG9231330015	magnetic screw plug assy	1
5	Q72336	sealing ring	2
6	190003989290	plug	1
7	WG9231330105	air plug	1
8	WG9231330106	rubber tube	1
9	Q151C1230TF2	hexagonal head bolt	12
10	Q40312	spring gasket	16
11	190003810631	double head bolt	4
12	190003888457	self-locking nut	4
13	WG2297Y4835	nameplate	1

14	190003904529	rivet	2
15	WG9014330125	joystick assy	1
16	1680M320015	O type gasket	1
17	WG9112330016	pin	1
18	WG9231330808	pin	1
19	WG9231330809	pin	1
20	Q43705	steel retaining ring for shaft	1
21	Q1200850F3	double head bolt	1
22	WG61000060084	space bushing	1
23	Q40108	flat gasket	1
24	Q33208	hexagonal locking nut	1
25	WG9231340943	support of chamber	1
26	Q151B2045TF2	hexagonal head bolt	7



REAR DRIVING AXLE, HC16 AXLE			
<i>powered by CHINA HEAVY TRUCK PARTS STORE CO LTD, <a href="http://www.sinotruk-parts-store.com">www.sinotruk-parts-store.com</a></i>			
Serial	Number	Name	Quantity
	AZ9231342018	rear brake lining (8 holes 202x220x14.5)	
	AZ9231320273	differential assy (0273)	
1	199012320098	main reduction case	1
2	WG9012320131	bearing seat	1
3	WG9012320173-176	adjusting gasket	1
4	Q150B1230TF2	hexagonal head bolt	12
5	WG9012320133	sealing ring	1
6	AZ9231320274	differential case	1
7	190003326148	cone rolling bearing	2
8	AZ9231320150	universal joint shaft	
9	WG9231320151	half shaft gear	2
10	WG9231320152	planetary gear	4
11	WG9231320153	planetary gear gasket	4
12	AZ9231320154-158	adjusting gasket	1
13	WG9231320169	hexagonal head bolt	8
14	WG3809320159	bearing adjusting nut for differential	2

15	WG79000320027	thrust washer	2
16	Q150B0816	hexagonal head bolt	2
17	Q40308	spring gasket	2
18	WG9231320912	cone gear ratio 4.8	1
18	WG9231320911	cone gear ratio 3.93/4.42	1
18	WG9231320913	cone gear ratio 5.73	1
19	Q151B1632TF2	hexagonal head bolt	16
20	WG9114320003	locking plate-driven cone gear bolt	1
21	190003326546	cone rolling bearing	1
22	190003326236	cone rolling bearing	1
23	WG880320002-15	adjusting gasket	1
24	WG9231320110	Φ 165 flange	1
25	WG79000320013	flange nut	1
26	Q5005055	cotter	1
27	WG9231320001	main reduction oil seal assy	1
28	WG3809320155	fixed shifting sleeve	1
29	WG3809320158	thrust washer	1
30	WG3809320157	nut	1
31	WG9012320014	shifting fork	1
32	Q2800825	slotted cone head locking screw	1
33	Q340B08	I-type hexagon nut	1
34	WG1800320077	shifting fork moving block	2
35	WG3809320156	sliding shifting sleeve	1
36	WG9012320023	bending plate	1
37	WG2297Y4835	nameplate	2



WHEEL REDUCTER AND BRAKE, HC16 AXLE			
<i>powered by CHINA HEAVY TRUCK PARTS STORE CO LTD, <a href="http://www.sinotruk-parts-store.com">www.sinotruk-parts-store.com</a></i>			
Serial	Number	Name	Quantity
1	AZ9231340910	read hub assy	2
2	WG9003884160	bolt for wheel	20
3	WG9012340029	sealing ring	2
4	WG9231340921	oil retaining cover	2
5	WG9012340020	sealing gasket	2
06、 43	Q150B0816	hexagonal head bolt	20
07、 44	Q40308	spring gasket	20
8	WG9231340917	space ring	2
9	WG9231340129	kingpin bearing ratio 3.93	20

9	WG99-934-013	kingpin bearing ratio 4.8/4.42/5.73	20
10	WG9112340113	sealing ring for shaft	2
11	WG9112340114	sealing ring for shaft	2
12、 13	190003326167	cone rolling bearing	4
14	190003961309	column head inner hexagon screw plug	4
15	190003098026	sealing gasket	4
16	WG9231340001	cap	2
17	WG9012340011	cap pin	2
18	Q150B1018	hexagonal head bolt	20
19	199112340029	planetary carrier assy ratio 4.8/4.42/5.73	2
19	AZ9231340128	planetary carrier assy ratio 3.93	2
20	Q2541025	cross recess screw	8
21	WG880420027	oil retaining plate for planetary carrier	2
22	Q151C1295TF2	hexagonal head bolt	10
23	190003901704	column pin	10
24	WG9012340122	planetary wheel Z=16	10
25	WG9012340075	planetary wheel gasket ratio 4.8/4.42/5.73	20
25	WG9231340131	planetary wheel gasket ratio 3.93	10
26	WG9012340077	gasket	10
27	WG9012340004	planetary shaft ratio 4.8/4.42/5.73	10
27	WG9231340130	planetary shaft ratio 3.93	10
28	190003330148	steel ball	10
29	WG9012340121	annular gear ring Z=57	2
30	WG880420014	retaining ring for shaft	2
31	WG9112340021	gear ring carrier assy ratio 4.8	2
31	WG9231340125	gear ring carrier assy ratio 3.93	2
32	WG880420034	thrust gasket ring	2
33	WG680340015	thrust gasket	2
34	WG680340016	adjusting gasket 0.1	need
34	WG680340017	adjusting gasket 0.2	need
34	WG680340018	adjusting gasket 1	need
34	WG680340019	adjusting gasket 1.5	need
34	WG680340186	adjusting gasket 0.5	need
34	WG680340187	adjusting gasket 0.15	need
35	WG9012340005	sun wheel Z=23 ratio 4.8/4.42/5.73	2
35	WG9231340121	sun wheel ratio 3.93	2
36	WG9012340076	sun wheel gasket	2
37	WG9231340223	half shaft left	1
38	WG9231340224	half shaft right	1
39	WG880410097	gasket ratio 4.8/4.42/5.73	2
39	WG9231340132	gasket ratio 3.93	2
40	190003933351	elastic retaining ring for shaft	2

41	WG9231342006	rear brake drum	2
42	AZ9231342008	dust cover for brake	2
44	Q40308	spring gasket	12
45	WG880340037	sealing ring	8
46	AZ9231340562	brake plate	2
47	WG9112340010	output protection cover for ABS sensor	2
48	AZ9231340956	support for ABS sensor	2
49	AZ9231342010	brake shoe with lining assy	4
50	AZ9231340104	backing pin	4
51	Q5280624	elastic column pin	4
52	WG9231340105	rolling wheel	4
52a	WG9231340106	support for rolling wheel of brake shoe	4
53	WG2258W803	returning spring	2
54	WG9112340049	returning spring	4
56	WG9231340226	left brake crankshaft	1
57	WG9231340227	right brake crankshaft	1
58	WG880440010	additional gasket	4
59	WG880340023	O-ring	2
60	WG9100340056	left slack adjuster arm	1
61	WG9100340057	right slack adjuster arm	1
62	WG9100340017	compound bushing	4
63	190003933300	elastic retaining ring for shaft	2
64	WG880340022	gasket	2
65	WG80320028	adjusting gasket	need
65	WG80320029	adjusting gasket	need
65	WG80320030	adjusting gasket	need
65	WG80320046	adjusting gasket	need
66	190003933116	spring retaining ring for shaft	2
67	Q151B1635TF2	hexagonal head bolt	16
68	Q151B1645TF2	hexagonal head bolt	4
69	199014340041	support for crankshaft	2
70	190003963112	grease nipple	2
71	WG880340031	adjusting gasket 0.1	need
71	WG880340032	adjusting gasket 0.15	need
71	WG880340033	adjusting gasket 0.4	need
71	WG880340034	adjusting gasket 1	need
72	WG3809470031	adjusting gasket	need
72	WG3809470032	adjusting gasket	need
72	WG3809470033	adjusting gasket	need
73	Q151B1490	hexagonal head bolt	2
74	Q151B1445	hexagonal head bolt	2